

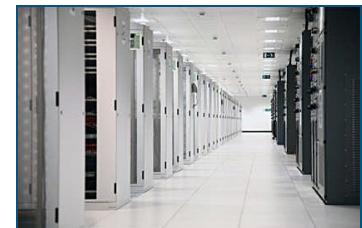


A.T. Monitors

A leader in leak detection and level monitoring equipment

Product Comparison & Selection Chart

Monitors & modules →	5100	5107	1503	DM335	RAM1
Main Functions					
Liquid leak detection	●	●	●		
Level detection	●	●	●		
Level indication		●	●		
Level monitoring				●	
Remote alarm indication					●
Monitor Channels Available					
Number of channels for liquid leak or level detection	12	6	2 or 4		
Number of channels for vapour or for ATI-5020 probe	4	1			
Number of channels for level monitoring				1	
Total channels available	16	7	2 or 4	1	1
Alarm Features					
Alarm LED indicators, one per channel	●	●	●	●	
Single alarm light indicator					●
Individual alarm relay contact for each channel	●		●	●	
One alarm relay contact common to all channels		●			
Audio alarm (Piezo buzzer)	●	●	●		●
Audio alarm re-activation timer (Acknowledge)	●	●			
Fail LED indicator		●		●	
System Test pushbutton switch and LED indicator		●			
Alarm acknowledge pushbutton switch	●	●			●
Alarm reset pushbutton switch	●				
Power Requirements, Features & Options					
Power supply requirements	120VAC	12VDC or 10VAC	120VAC	12VDC or 24VDC	12VDC
Power LED indicator	●	●	●	●	
Low Battery LED indicator	●				
Battery backup option available	●				
Replacement, rechargeable gel-cell battery available	●				
External 120/10 VAC output transformer available		●			
Other Features & Options					
Normal or Latching relay (pump-on/pump-off)			●		
NEMA-4X enclosure				●	●
Locking cover	●				
Sensors					
Accepts all 5005 series water detection sensors	●	●	●		
Accepts 5007B dual liquid sensor	●	●			
Accepts 5008 vacuum sensor	●	●	●		
Accepts all 5010 series, float switch sensors	●	●	●		
Accepts 5010SB sump brine sensor	●	●	●		
Accepts all 5016 series petroleum sensors	●	●			
Accepts 5025A water detection cable	●	●	●		
Accepts 5020 explosion-proof level detection probe	●	●	●		
Accepts 5029 explosion-proof level monitoring probe				●	
Connects to 5100 or 5107 monitors, or DM335 module					●



aT MONITORS

A.T. MONITORS
A division of Armstrong Technologies Inc.

14 Birch Drive
Kemptville, Ontario
K0G 1J0, CANADA

Phone: 613-258-5225
Fax: 613-258-2698
E-mail: info@atmonitors.com
Internet: www.atmonitors.com